

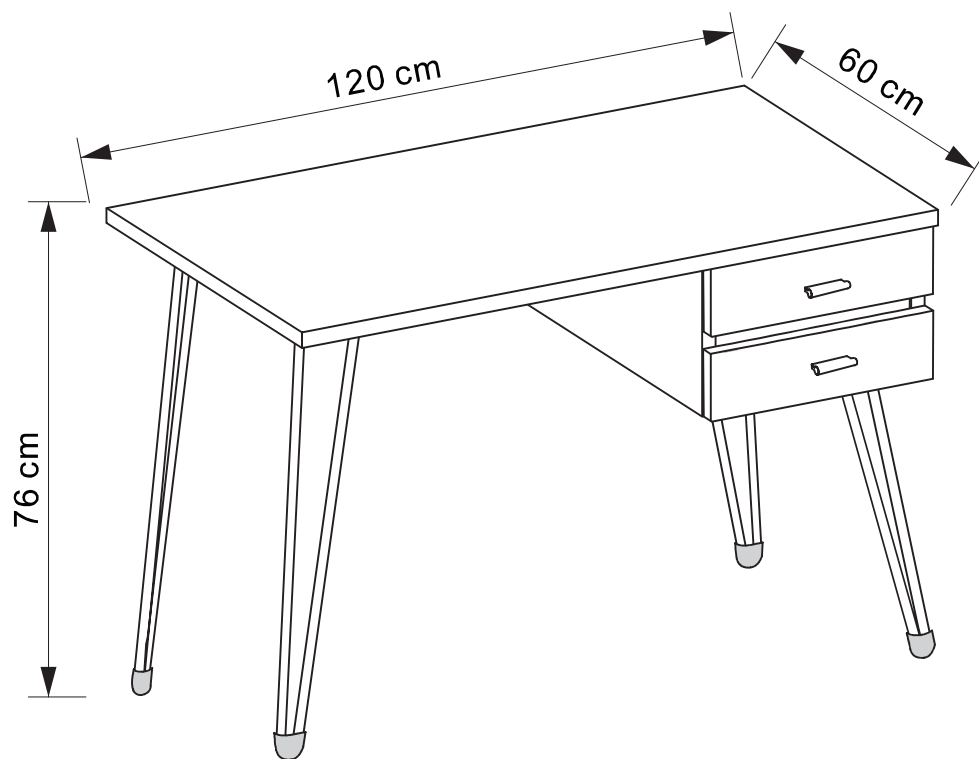


## ASSEMBLY INSTRUCTION

### LUCCA STUDENT DESK

ITEM CODE : 64386

Imported by Amart Furniture Pty Ltd, Qld, Brisbane Australia. For any assistance with assembly or for missing parts please phone Amart Furniture , Customer Service Free call 1800 351 084

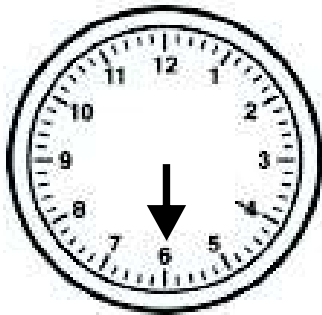


Imported by Amart Furniture Pty Ltd, Brisbane QLD Australia. For any assistance with assembly or for missing parts please phone Amart Furniture, Customer Service Free call 1800 351 084

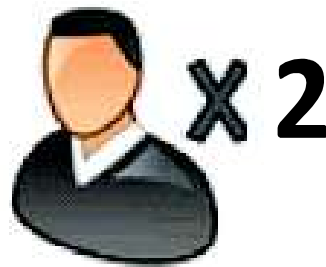
# PRE-ASSEMBLY PREPARATION

## BEFORE YOU START:

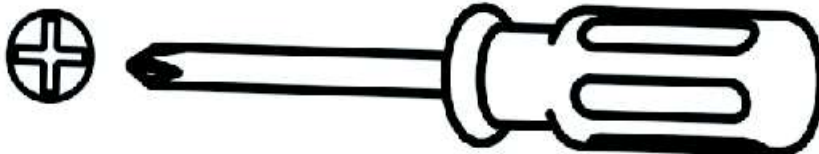
1. Choose a clean, level, spacious assembly area. Avoid hard surfaces that may damage the product
2. Take care when lifting. Product should be assembled as near as possible to the point of use
3. Ensure that you have all required contents for complete assembly
4. Always read the assembly instructions carefully before beginning assembly.
5. Keep all hardware parts and packaging out of reach of small children.
6. Do not over tighten the screws and bolts as this may damage the threads



**ALLOW 30 MINUTES**

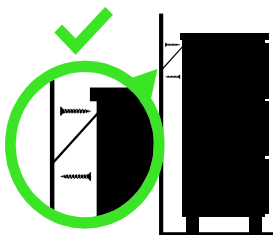


**PEOPLE REQUIRED**



**ADDITIONAL TOOLS REQUIRED**

## **WARNING**



### **Children have died from furniture tipover.**

- ALWAYS secure it with an anchor device.
- NEVER allow children to stand, climb or hang on drawers, doors, or shelves.
- NEVER open more than one drawer at a time.
- Place heavy items down low

**NEVER put a TV on this furniture**

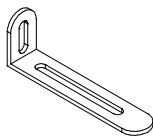


**This is a permanent label.  
Do not remove!**

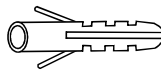
## SAFETY BRACKETS INSTRUCTIONS

1. Attach one Mounting Plate to the wall with the Large Screws. Make sure to attach the Mounting Plate into a stud. If mounting into brick or masonry you will need to acquire wall anchors.
2. Attach the second Mounting Plate to the furniture frame with the Short Screws.
3. Move the furniture to its final position. Thread a Wall Strap through the both Mounting Plates and tighten until snug. Do not over tighten.
4. Make sure that the Mounting Plates are firmly attached to the wall and furniture and that the Wall Strap is snug.

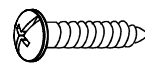
### HARDWARE



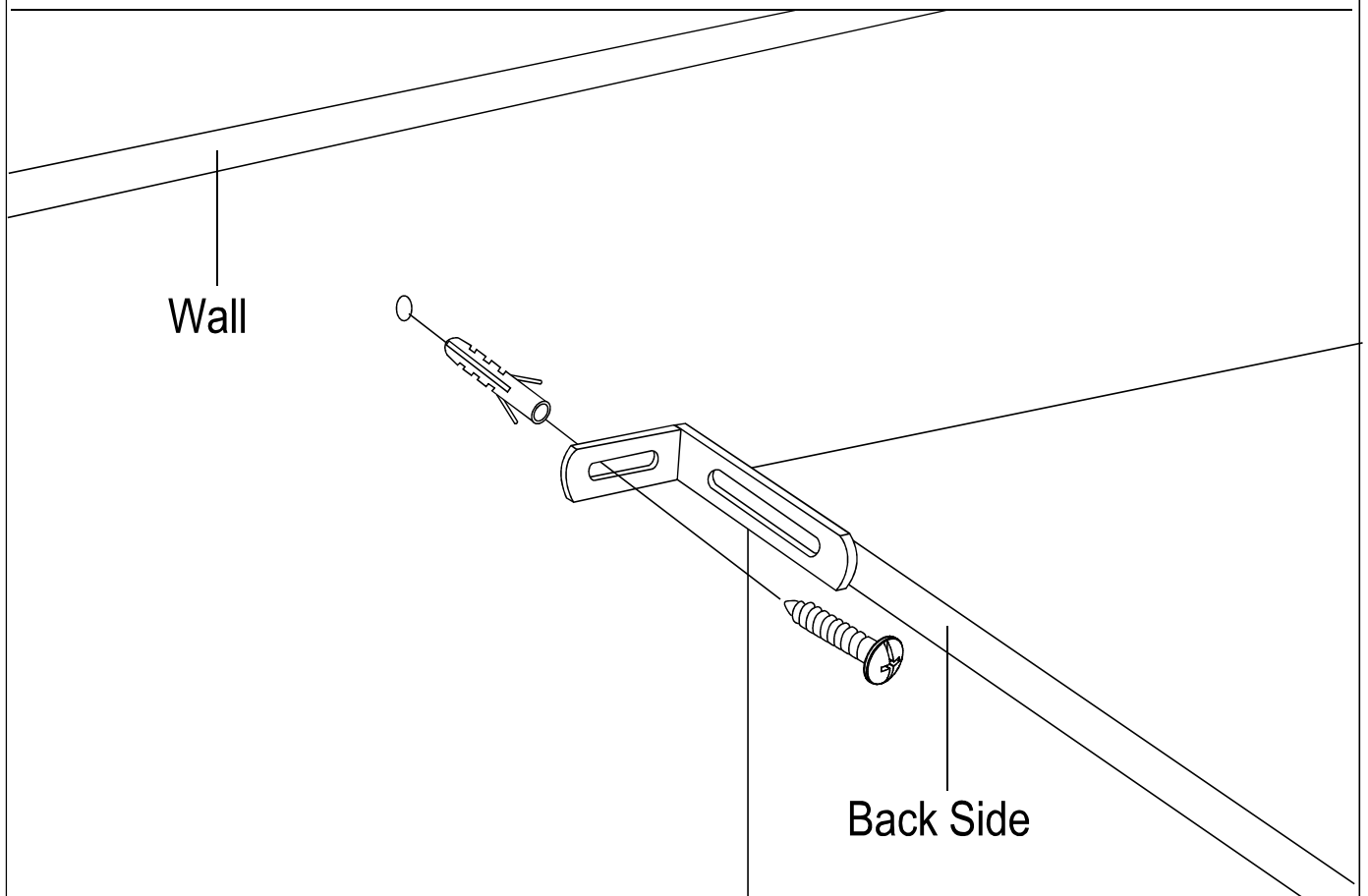
Metal x 2



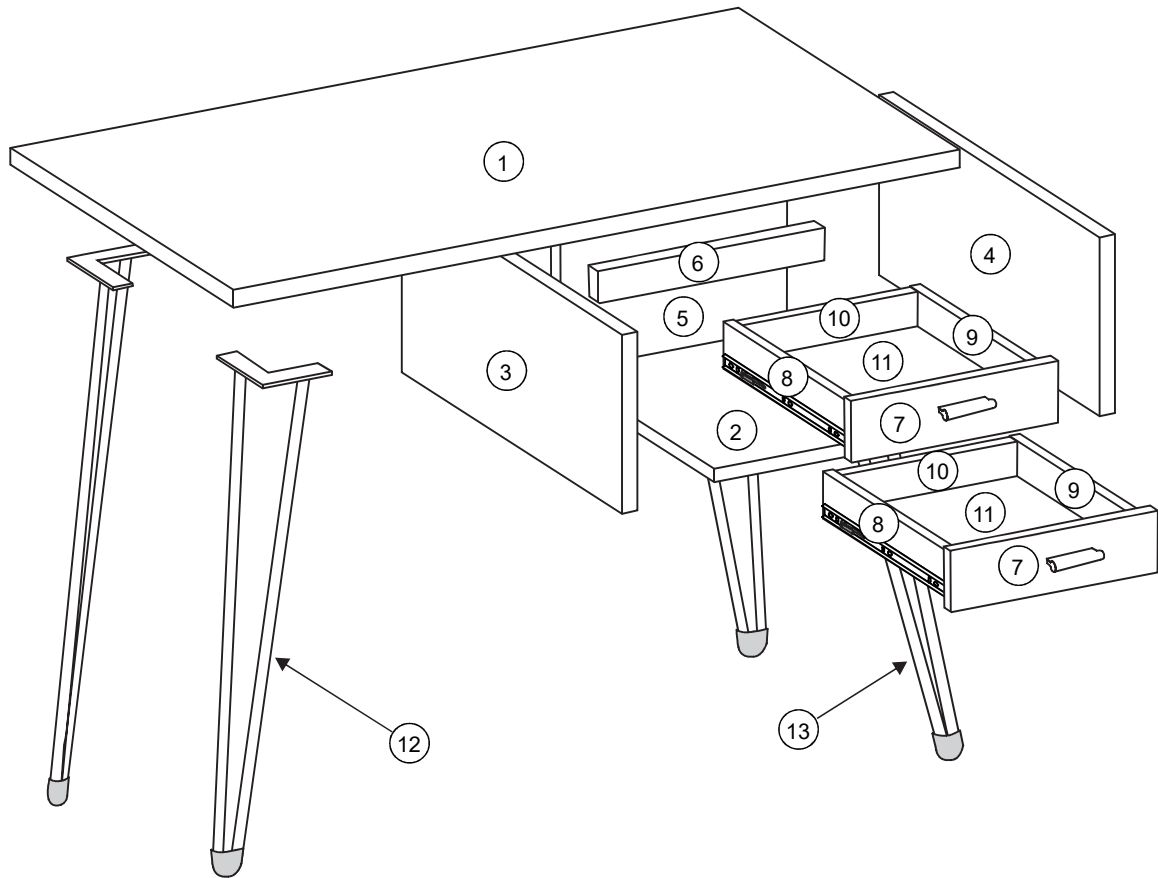
Wall Nut x 2



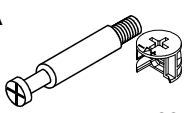


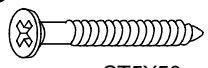
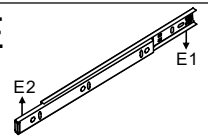


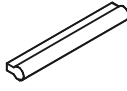
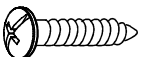
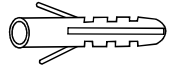
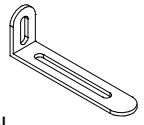

Screw x 2



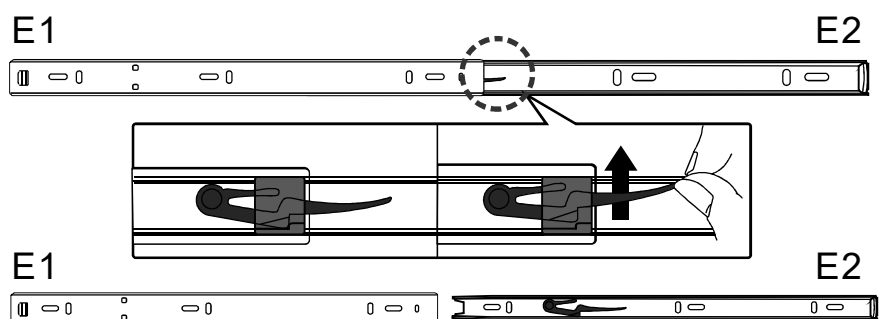
# PARTS LIST



				9	Drawer Right Panel
1	Top Panel	5	Back Panel	10	Drawer Back Panel
2	Bottom Panel	6	Front Panel	11	Drawer Bottom Panel
3	Left Panel	7	Back Panel	12	Left frame,height
4	Right Panel	8	Drawer Left Panel	13	Right frame,height

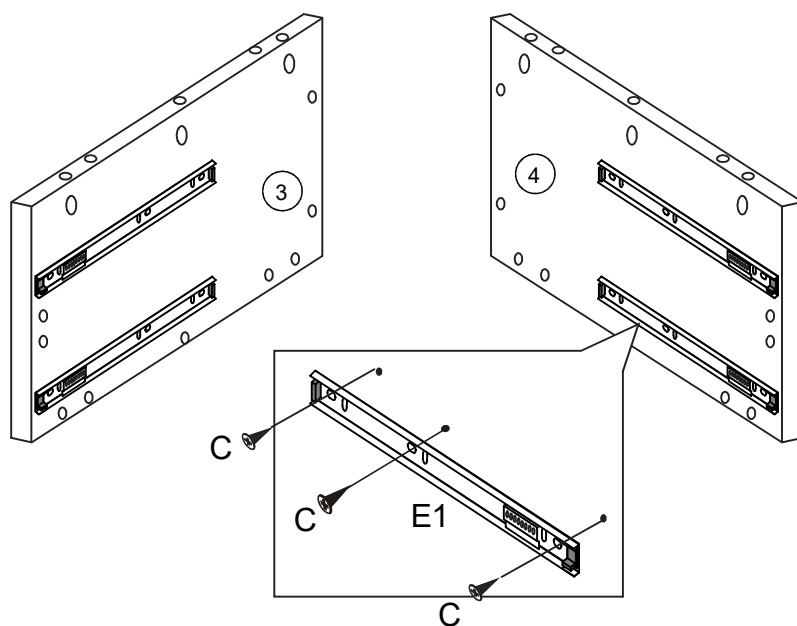
<b>A</b>  Bolt 30pcs	<b>B</b>  M6X12mm 20pcs	<b>C</b>  ST3.5X12mm 28pcs	<b>D</b>  ST5X50mm 8pcs	<b>E</b>  Drawer slideway 4pcs
<b>F</b>  8X30mm 10pcs	<b>G</b>  M4X18mm 4pcs	<b>H</b>  Handle 2pcs	<b>I</b>  ST4X25mm 2pcs	<b>J</b>  Wall Nut 2pcs
<b>K</b>  Metal 2pcs	<b>L</b>  30pcs			

## STEP 1



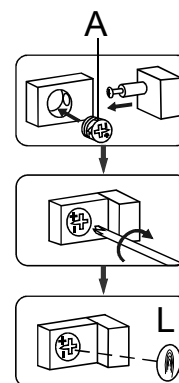
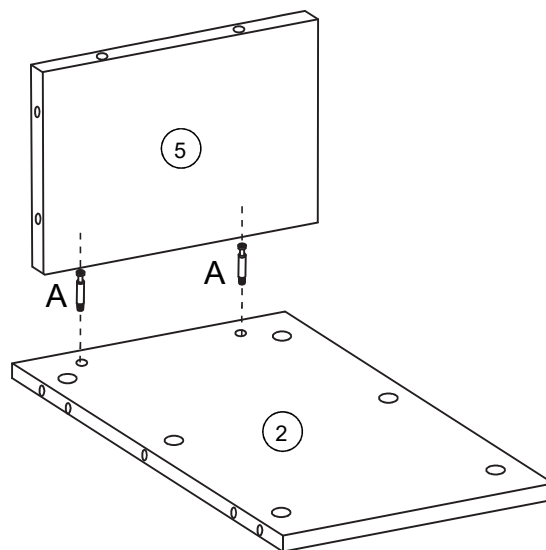
Raise the plastic tab on the runners and separate (E1) from (E2).

## STEP 2



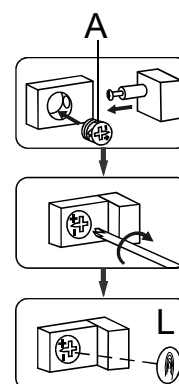
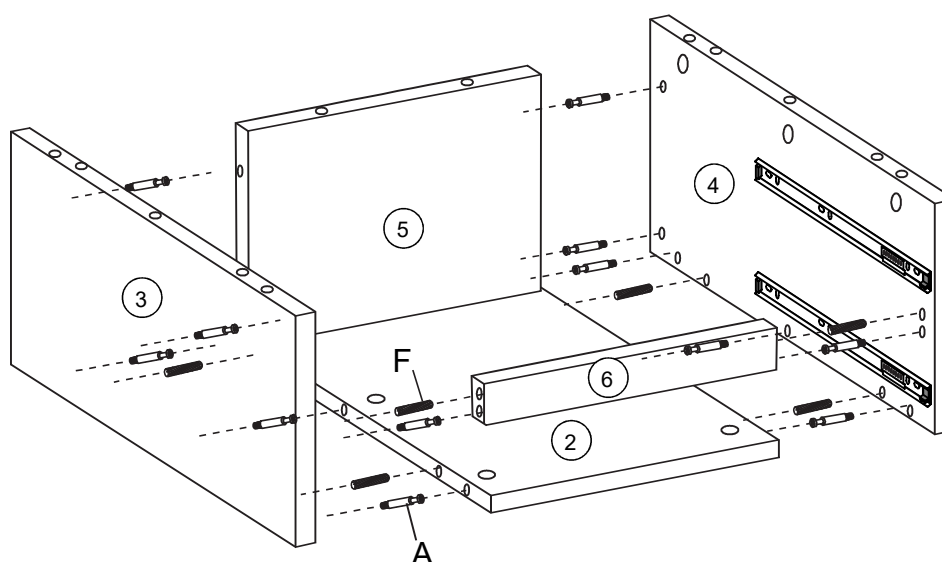
Use screw (C) to lock the slides (E1) with panel (3) & (4) .

## STEP 3



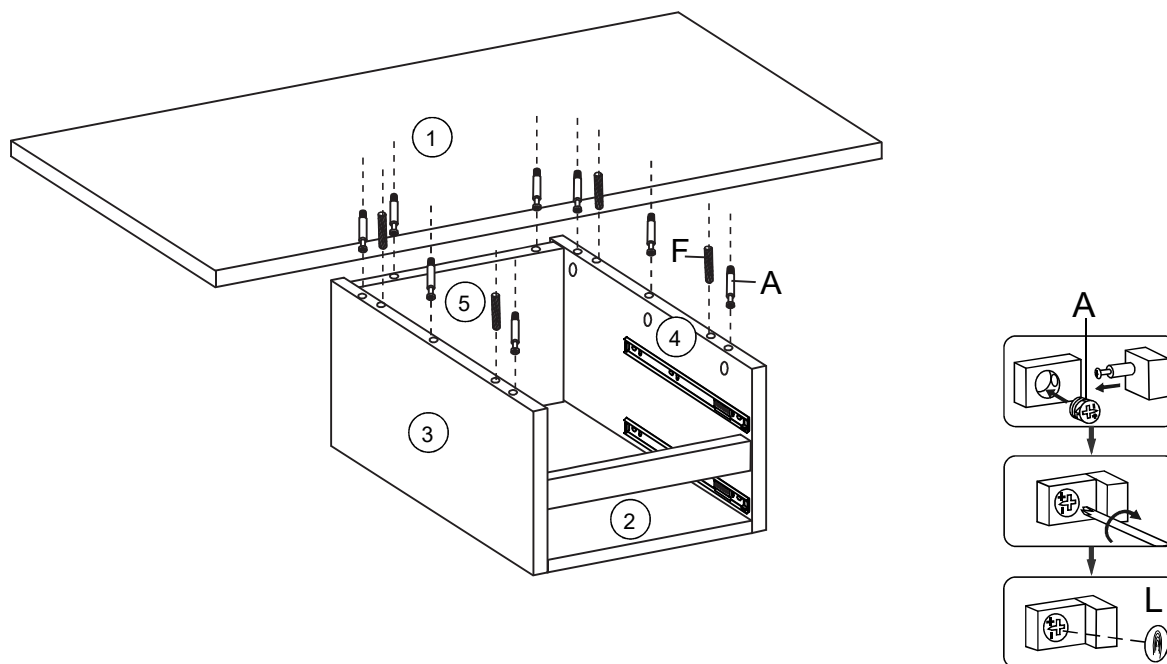
Use (A) Cam-bolt and Cam-lock to lock panel (2) with panel (5).  
Place sticker (L) to cover assembled bolt (A).

## STEP 4



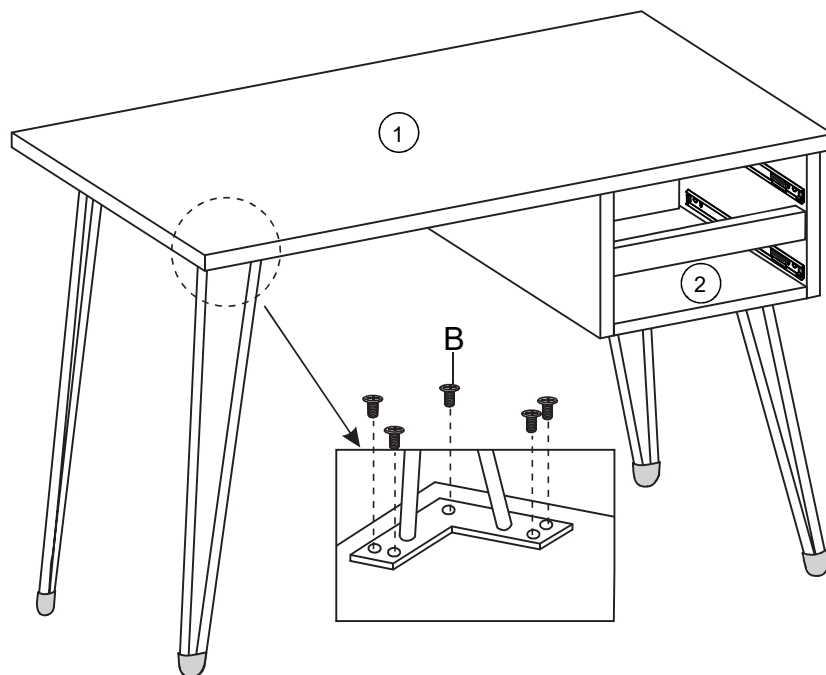
Put the wood dowel (F) into the related holes. Then use cam-bolt and cam-lock (A) to lock panels (2) & (3) & (4) & (5) & (6) together.  
Place sticker (L) to cover assembled bolt (A).

## STEP 5



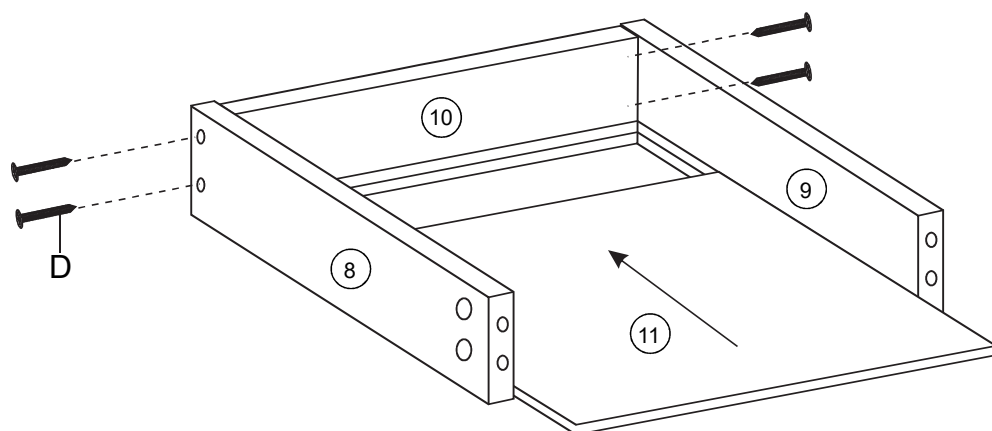
Put wood dowel (F) into the related holes. Use cambolt and cam-lock (A) to lock panel (1) with panel (3) & (4) together.  
Place sticker (L) to cover assembled bolt (A).

## STEP 6



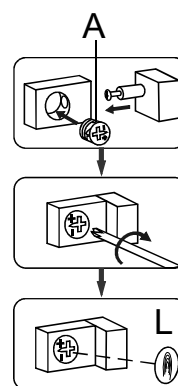
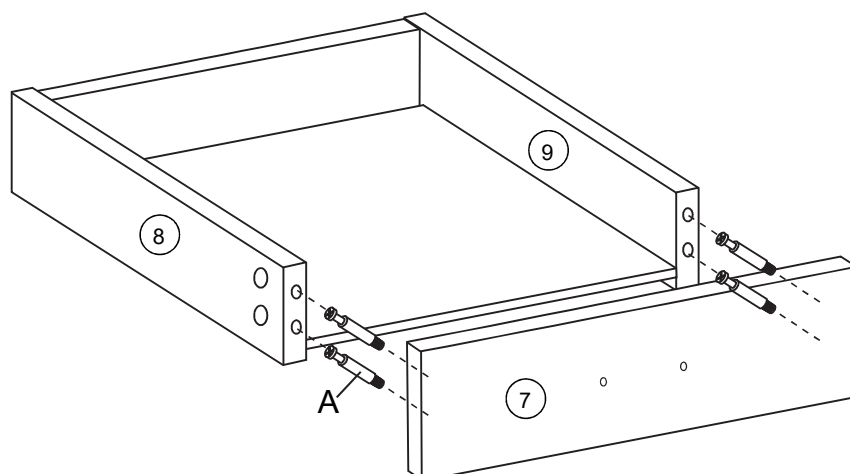
Use Bolt (B) to lock left and right frames with panel (1).

## STEP 7



Use screw (D) to lock panels (8) & (9) & (10). Then slide the panel (11) along with the track.

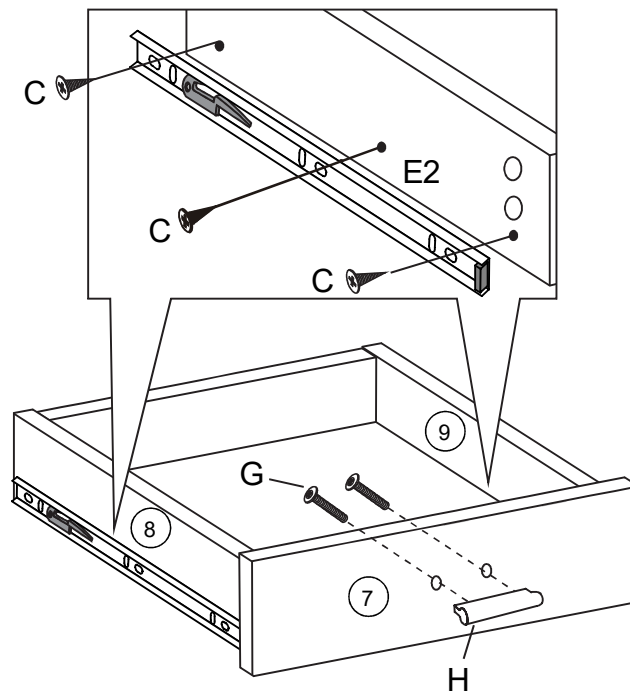
## STEP 8



Use cam-bolt and cam-lock A to lock panel (7) with panel (8) & (9) as shown. Place sticker (L) to cover assembled bolt (A).

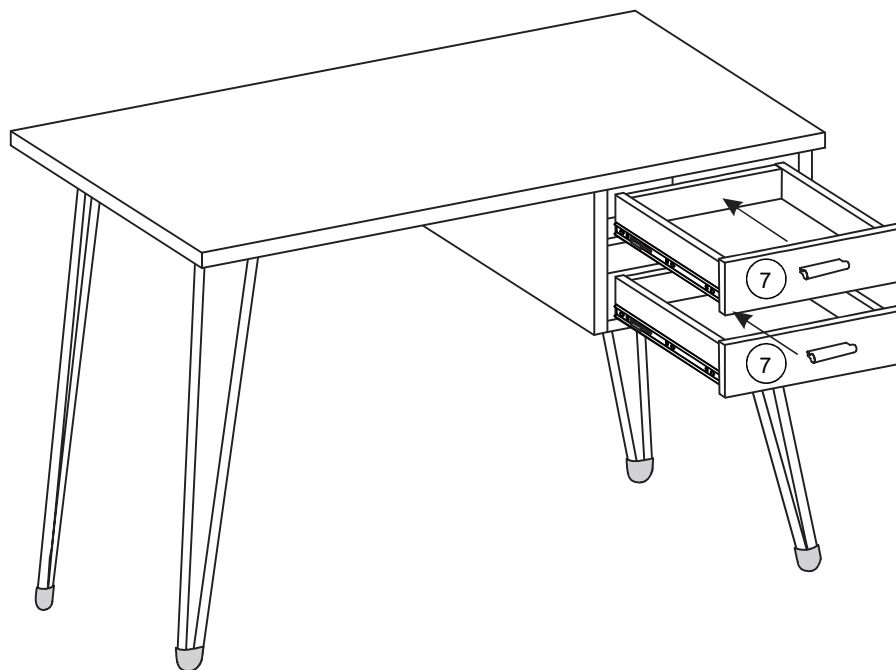


## STEP 9



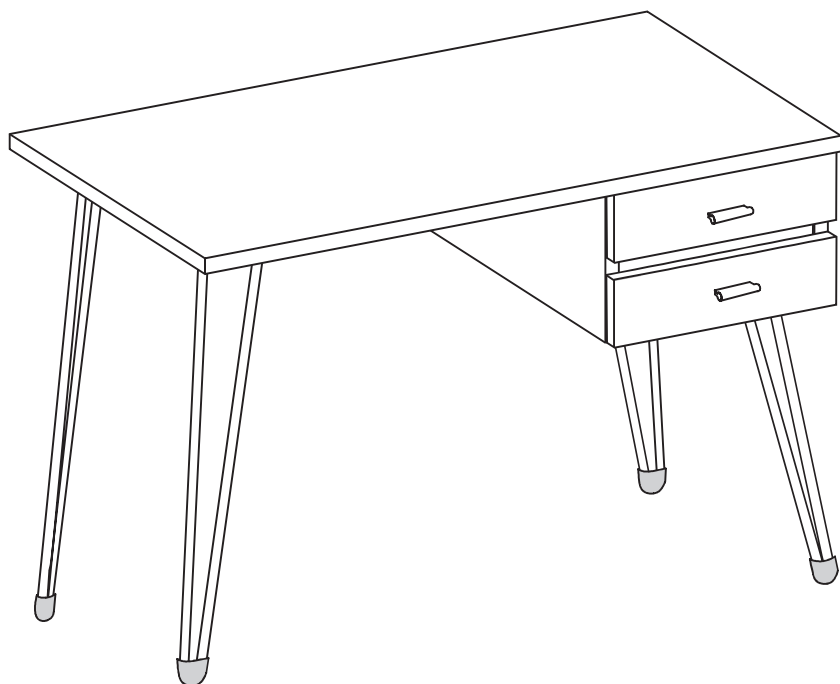
Use screw (C) to lock slide (E2) with panels (8) & (9) as shown.  
Use Bolt (G) to lock the handles with drawer.

## STEP 10



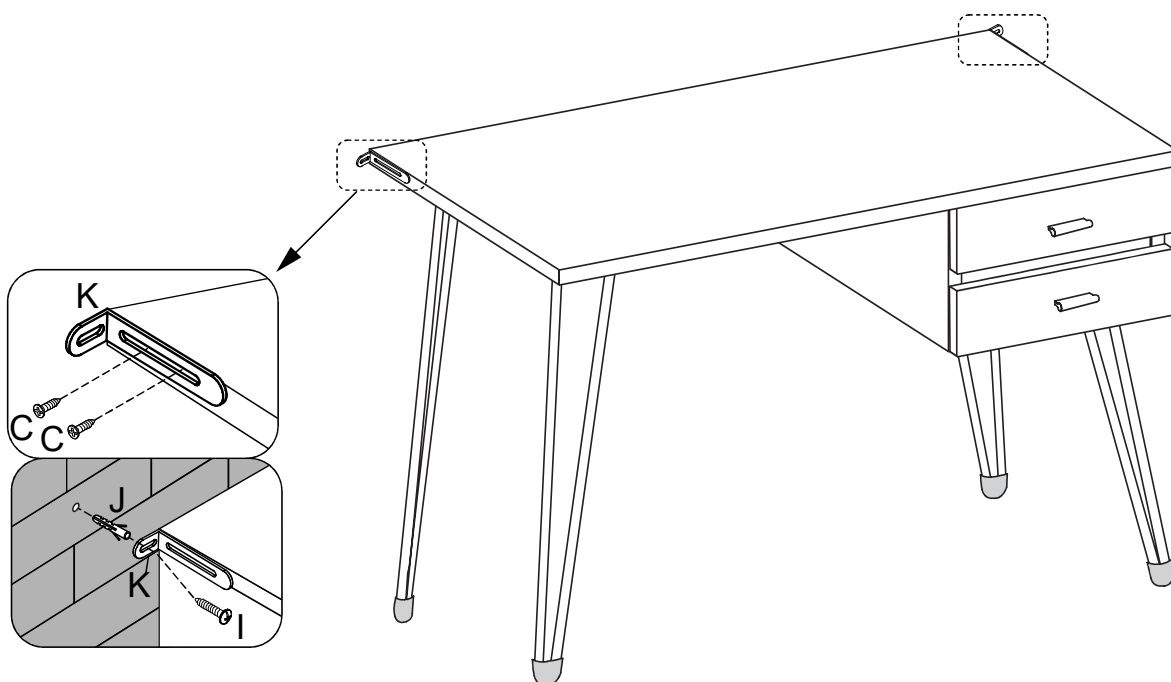
Put the drawers along with slides.

## STEP 11



Assembly is complete.

## STEP 12



Insert wall nut (J) to the wall, assemble metal (K) to top panel (1) using screw (C), then connect metal (K) and wall nut (J) using screw (I).

# GENERAL PRODUCT CARE



To protect your furniture, we suggest the following:

- Avoid placing your furniture in direct sunlight.
- Do not place furniture directly under windows.
- Do not place sharp materials (knife, fork, etc.) directly onto your furniture as sharp material may scrape and damage the finish.
- Do not place material with high temperature directly onto the surface of your furniture.
- Clean up spills quickly. Water left over a prolonged period of time may cause damage. Alcohol, perfume, nail polishes, aftershave and some medication may cause severe finish damage if not cleaned immediately.
- Use a clean, soft, dry, lint free absorbent cloth to clean your furniture. Do not use any detergent as they may contain ingredients that may react and damage the finish.

NOTE: If the above care advise is not adhered to your product warranty may become void